



# GMT MONTHLY MEMBERSHIP PROGRESS REPORT

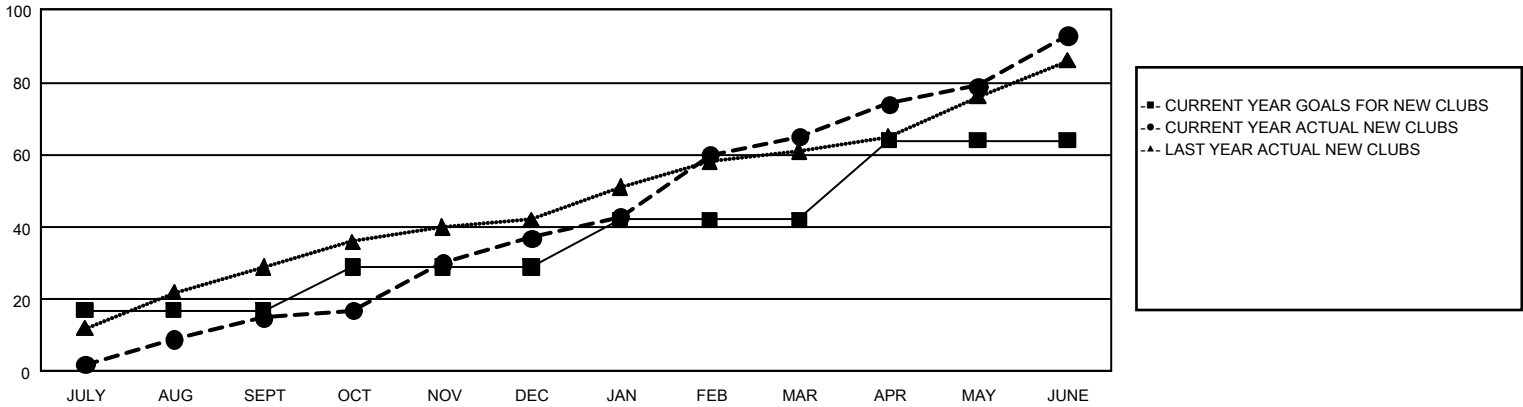
## GAT Constitutional Area 7

Results as of: 6/30/2025

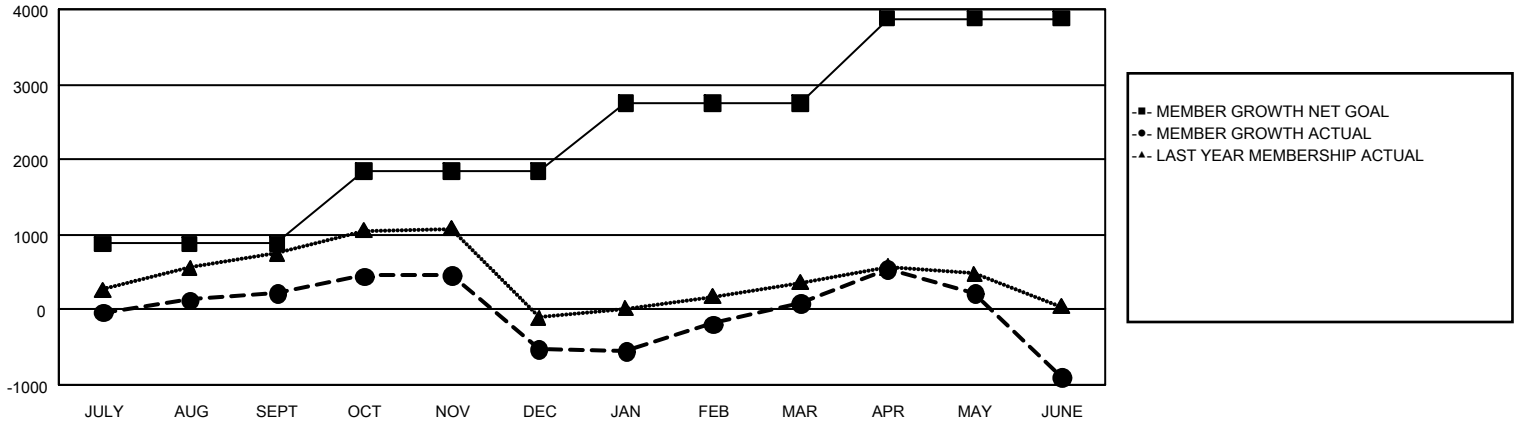
REPORT DOES NOT INCLUDE CLUBS IN UNDISTRICTED AREAS.

Clubs				Members			
RESULTS FOR 2024-2025				RESULTS FOR 2024-2025			
QUARTER	NEW CLUB GOAL	NEW CLUBS	DROPPED CLUBS	QUARTER	MEMBER GROWTH NET GOAL	MEMBER GROWTH ACTUAL	DROPPED MEMBERS ACTUAL (including transfers)
JULY/AUG/SEPT	17	15	20	JULY/AUG/SEPT	877	1,755	1,313
OCT/NOV/DEC	12	22	17	OCT/NOV/DEC	969	1,865	2,330
JAN/FEB/MAR	13	28	5	JAN/FEB/MAR	898	1,809	940
APR/MAY/JUNE	22	28	21	APR/MAY/JUNE	1,134	2,888	3,274

GOALS AND ACTUAL NEW CLUBS CUMULATIVE



GOALS AND ACTUAL MEMBERS CUMULATIVE



DROPPED CLUBS: 63		1,277 CLUBS OF 1,980 ADDED 1 OR MORE NEW MEMBERS	<u>GENDER DISTRIBUTION</u>	
			MALE	23,775 (55.18%)
			FEMALE	19,283 (44.75%)
<u>DROPPED MEMBERS</u>		<a href="#">CLICK HERE FOR CUMULATIVE MEMBERSHIP DATA</a>		
DECEASED	481		TOTAL FAMILY UNIT MEMBERS 6,920	
CLUB CANCELLED	302			
OTHER	7,017		FAMILY MEMBERS PAYING HALF DUES 3,746	
TOTAL	7,800			